

Is this art BIG enough? Follow the steps below, and refer to the provided sizing information to assess what size your images will be when used at 300 dpi.

STEPS TO DETERMINING IMAGE SIZE

1. Right-click the image file and select "Properties"
2. Click the "Details" tab in the "Properties" window
3. Scroll down to "Image"
4. Note the "Width" of the image in pixels*
5. To define the image width in inches at the ideal resolution of 300 dpi, divide the pixel value by 300

* Width includes frames or borders that may be present in the file. If existing frames and borders are not desired, be aware that cropping of such areas results in smaller image sizes. The area retained after cropping = "live image area."

ASSESSING IMAGE RESOLUTION

Images smaller than 400 pixels in width are considered **LOW RESOLUTION** and are not recommended for print production

X-SMALL: 400 - 650 pixels or 1.33 - 2.17 inches**

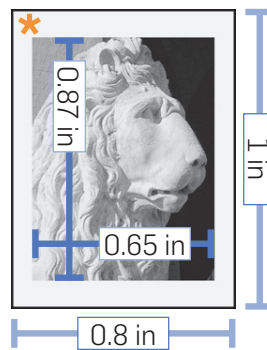
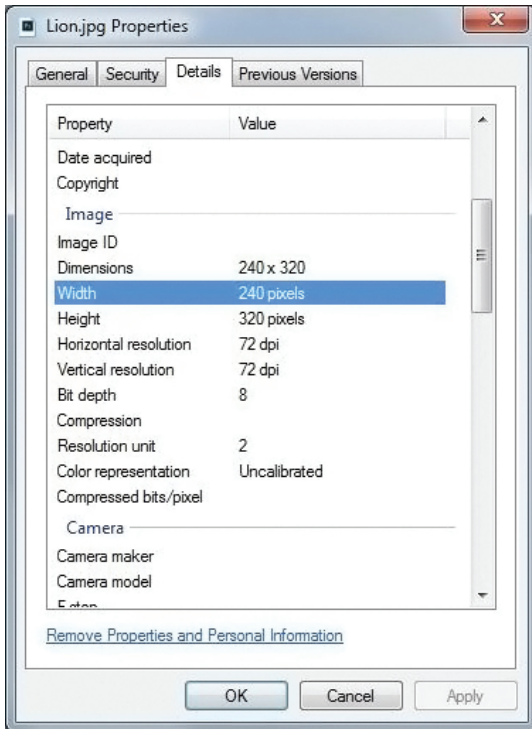
SMALL: 650 - 950 pixels or 2.17 - 3.17 inches**

MEDIUM: 950 - 1250 pixels or 3.17 - 4.17 inches

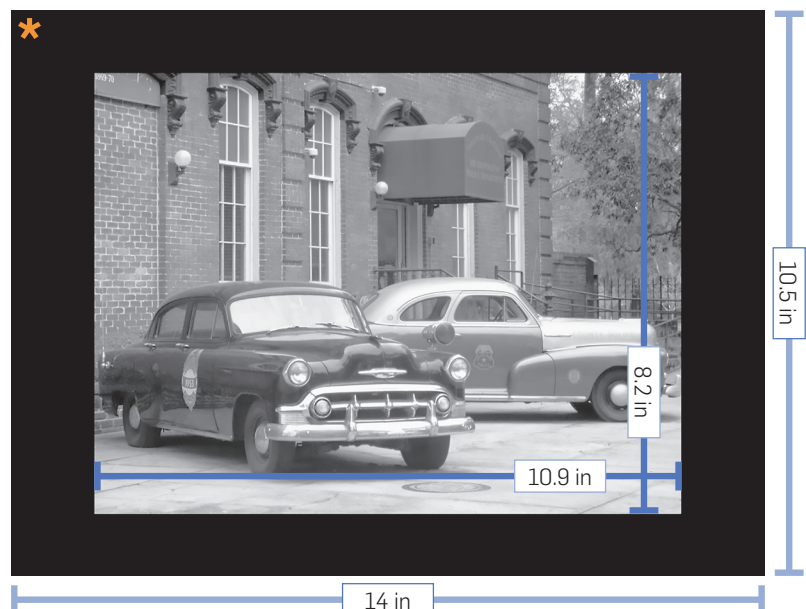
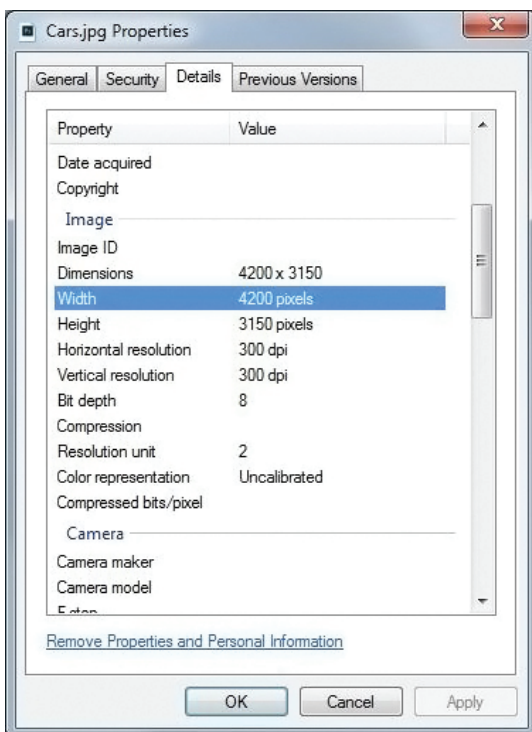
LARGE: 1250 - 1500 pixels or 4.17 - 5 inches

COVER QUALITY: 2100 - 3000 pixels or 7 - 10 inches

** Individual journal design specifications may not allow for X-SMALL or SMALL art.



Low resolution image file at 240 by 320 pixels, with live image area measuring 194 by 260 pixels



High resolution image file at 4200 by 3150 pixels, with live image area measuring 3273 by 2457 pixels

COVER IMAGE

42 picas = 7 inches wide
at 300dpi
or
2100 pixels wide

X-SMALL IMAGE

13 picas = 2.17 inches wide
at 300 dpi
or
650 pixels wide

SMALL IMAGE

19 picas = 3.17 inches wide
at 300 dpi
or
950 pixels wide

MEDIUM IMAGE

25 picas = 4.17 inches wide
at 300dpi
or
1250 pixels wide

LARGE IMAGE

30 picas = 5 inches wide
at 300dpi
or
1500 pixels wide